



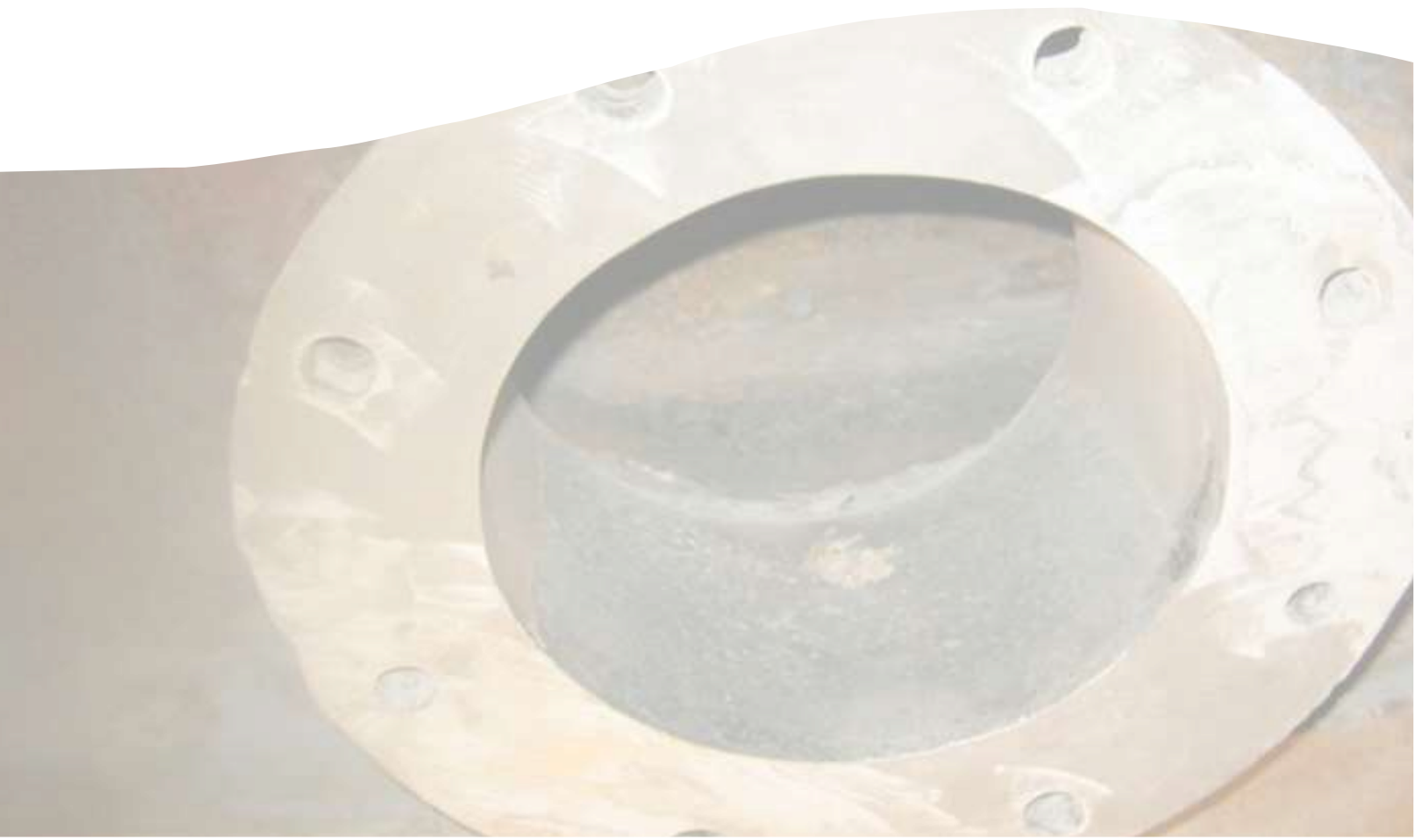
resimac Ltd. 

Repair

Protect

Upgrade

Metal Repair Systems Guide



Metal Repair Products - Product Selector Guide

		101	102	103	104	105	106	107
Product Characteristics	Epoxy	☐	☐	☐	☐	☐	☐	☐
	Polyurethane							
	Solvent Free	☐	☐	☐	☐	☐	☐	☐
	Solvent Based							
	Paste Grade	☐					☐	☐
	Fluid Grade		☐		☐			
	Putty Grade			☐		☐		
	Machinable	☐	☐	☐	☐	☐	☐	☐
Curing	Fast Cure <45mins			☐	☐	☐	☐	
	Standard Cure <2hrs	☐	☐					
	Extended Cure <4hrs							☐
Wet Film Thickness	<1mm build		☐					
	1mm-3mm				☐			
	Up to 20mm			☐		☐	☐	
	Up to 25mm	☐						☐
Surface Preparation	Manual			☐	☐	☐	☐	
	Mechanical ST2/3	☐	☐	☐	☐	☐	☐	☐
	Hydro-blasted				☐		☐	
	Abrasive Blast SA2.5	☐	☐					☐
	Oily Surface				☐			
	Damp/ Wet Surface						☐	
Temperature Resistance	Dry 130°C				☐		☐	
	Dry 150°C			☐		☐		
	Dry 180°C							☐
	Dry 200°C	☐	☐					
Application	Plug holes			☐		☐		
	Patch Repair	☐					☐	☐
	Rebuild surfaces	☐					☐	☐
	Resurfacing		☐		☐			
	Crack filling	☐		☐		☐	☐	☐
	Bonding metal to metal	☐					☐	☐
	Casting		☐					
	Underwater					☐	☐	

Metal Repair Products - Typical Applications

	101	102	103	104	105	106	107
Base plate – cracked	☒			☒		☒	☒
Bearing housing – rebuild	☒						☒
Bearing support – rebuild	☒						☒
Bow thrusters – rebuild	☒						☒
Chutes – rebuild	☒					☒	☒
Engine block– crack	☒		☒			☒	☒
Engine block - rebuild	☒						☒
Evaporators – rebuild	☒						☒
Flange repair	☒		☒	☒		☒	☒
Heat exchanger end plate - rebuild	☒						☒
Hydraulic rams – scored	☒						☒
Hoppers – rebuild	☒					☒	☒
Keyways – rebuild	☒						☒
Kort nozzles – rebuild	☒						☒
Pintle sleeves – rebuild	☒						☒
Pipe work external—leak	☒		☒	☒		☒	☒
Pipe work internal—rebuild	☒					☒	☒
Process vessel – rebuild	☒						☒
Plate bonding	☒			☒		☒	☒
Propeller – rebuild	☒						☒
Pump casing—holed	☒		☒	☒		☒	☒
Pump casing—rebuild	☒						☒
Pump impeller – rebuild	☒						
Scrubber unit rebuild	☒						☒
Slug catcher repair	☒						☒
Sour gas treatment	☒						☒
Sump repair	☒					☒	☒
Turbine blades	☒						☒
Tank seam	☒	☒	☒	☒		☒	☒
Tank base—internal	☒					☒	☒
Tank Repairs	☒	☒	☒	☒		☒	☒
Underwater repairs					☒	☒	

Metal Repair Products - Product Specifications

	101	102	103	104	105	106	107
Compressive strength Tested to ASTM D 695	1075kg/ cm ² (15,300psi)	1075kg/ cm ² (15,300psi)	843kg/ cm ² (12,000psi)	185kg/ cm ² (2630psi)	843kg/ cm ² (12,000psi)	185kg/ cm ² (2630psi)	839kg/ cm ² (11,900psi)
Corrosion Resistance Tested to ASTM B117	5000 hours	5000 hours	n/a	5000 hours	n/a	5000 hours	5000 hours
Flexural Strength Tested to ASTM D790	703kg/cm ² (10,000psi)	703kg/cm ² (10,000psi)	455kg/cm ² (6470psi)	240kg/cm ² (3400psi)	455kg/cm ² (6470psi)	240kg/cm ² (3400psi)	585kg/cm ² (8300psi)
Hardness Shore D to ASTM D785	100	100	92	85	92	85	100
Slump Resistance	25mm	3mm	25mm	3mm	25mm	20mm	20mm
Tensile Shear Adhesion Tested to ASTM D1002	185kg/cm ² (2630psi)	185kg/cm ² (2630psi)	185kg/cm ² (2630psi)	185kg/cm ² (2630psi)	185kg/cm ² (2630psi)	185kg/cm ² (2630psi)	180kg/cm ² (2550 psi)
Volume Capacity cc per kg	406	440	444	555	444	555	388
Base density gm per cm ³	2.70	2.70	n/a	1.80	n/a	1.80	2.70
Activator density gm per cm ³	1.70	1.00	n/a	1.80	n/a	1.80	2.40
Mixed product density gm per cm ³	2.46	2.50	n/a	1.80	n/a	1.80	2.58
Intermittent wet heat resistance (°C)	120	120	120	80	120	80	90
Immersion temperature resistance (°C)	70	70	60	60	60	60	60
Mixing ratio by volume	3:1	3:1	n/a	1:1	n/a	1:1	3:2
Mixing ratio by weight	5:1	8:1	n/a	1:1	n/a	1:1	1.7:1

Resimac Limited

Unit B, Park Barn Estate

Station Road, Topcliffe

Thirsk, North Yorkshire

YO7 3SE

UNITED KINGDOM

Tel: +44 (0) 1845 577498

Email: info@resimac.co.uk

Web: www.resimacsolutions.com